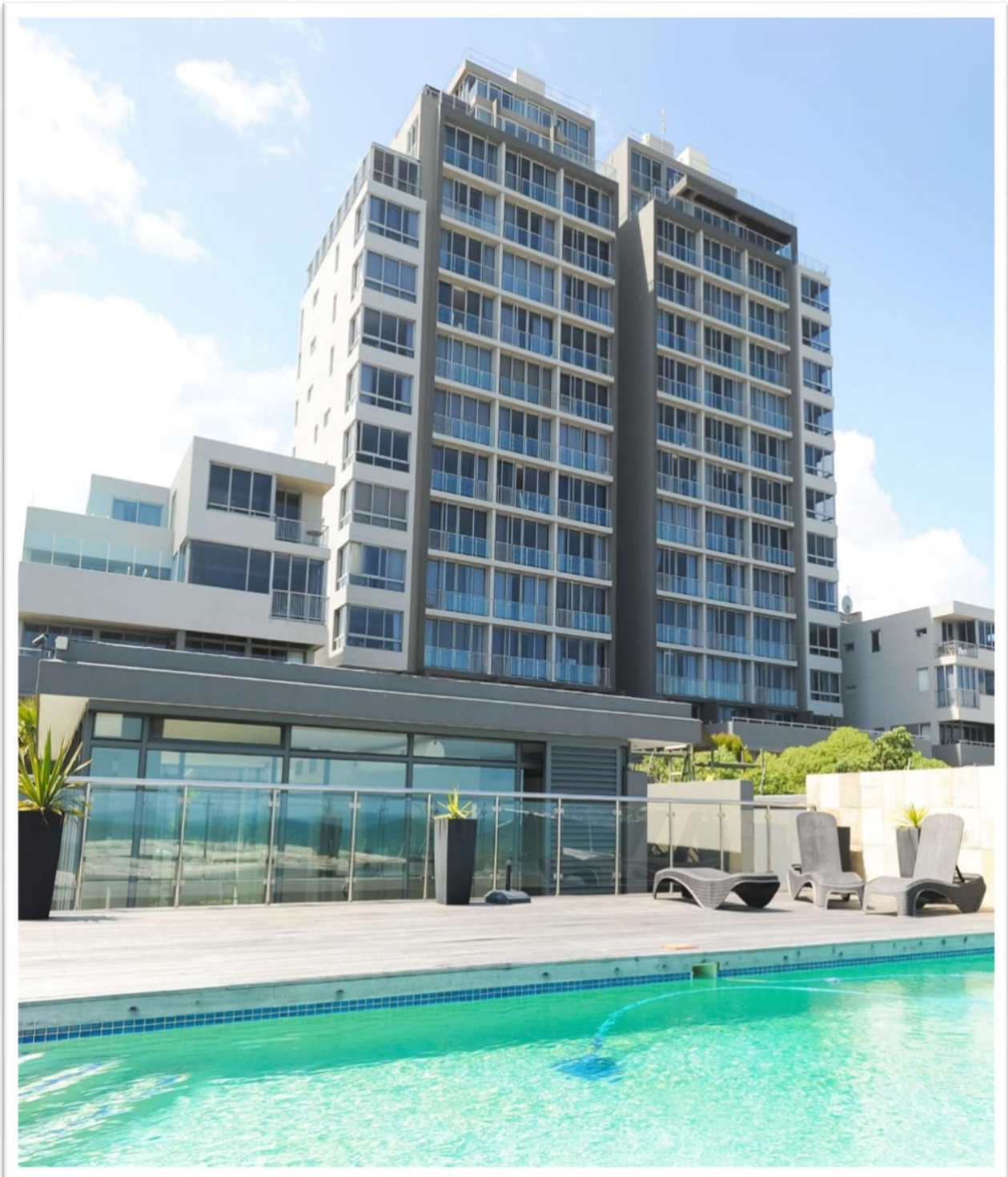


# *Infinity*

SELF-CATERING APARTMENTS

BLOUBERGSTRAND



## **INFINITY SELF CATERING APARTMENTS BLOUBERGSTRAND**

Infinity Self Catering Apartments is situated only metres from the Bloubergstrand beachfront, made famous for its ideal water sport conditions, including being rated as one of the top kiteboarding locations in the world. The beach stretches in both directions, making it great for long walks and exercising.

With uninterrupted views of Robben Island and Table Mountain, Cape Town's iconic rock face with its flat table top remains a favourite with almost every visitor that comes to Bloubergstrand! The silhouette of this spectacular mountain taken with a backdrop of cloud and sky and a foreground of ocean and sand is one where famous photographers have stood to capture this iconic shaped mountain of Cape Town. All the apartments are west-facing, ensuring that every unit enjoys the magnificent views of Cape Town, Table Mountain and Robben Island.

Infinity Apartments comprises of mostly 1 and 2 bedroom stylishly furnished apartments with well equipped kitchens and living areas. There is also a 2 and a 3 bedroom apartment each with a large open balcony with private splash pool. All apartments have a safe and secure parking on site

At Infinity Apartments guests/owners/tenants can make use of the outdoor pool area, barbeque facilities, workout in the fitness centre, have a dip in the indoor pool or they can enjoy a game of squash.

The popular Doodles Restaurant and various other restaurants and bars are situated in the surrounding area. The new Table Bay Mall is less than 5 km away.

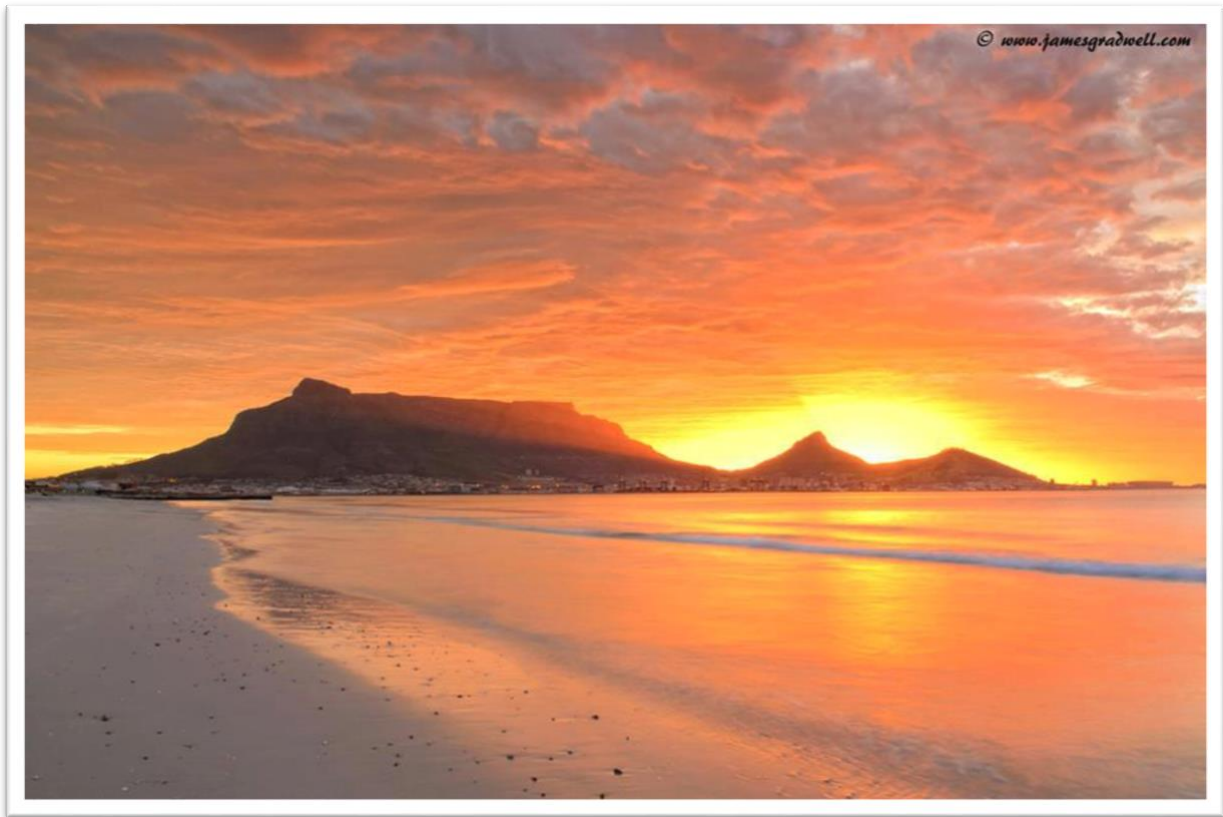


Infinity has a total of 102 apartments. The building was completed in 2007. After the success of Aquarius Luxury Suites, the developer Anton Mulder decided in 2017 to furnish the 42 apartments he owned and to rent them out as short to medium serviced furnished accommodation. This proved to be highly successful as this is a one of a kind upmarket apartment block with great views, amenities and beautiful décor elements.

These furnished apartments are now able to be purchased. Buyers can have insight into the ROI of every apartment to get an idea of what their income could be based on actual occupancy. Buyers can decide to either keep the apartment for their own personal use or if they wish to make use of the services currently being provided with regards to bookings, housekeeping etc or to manage it themselves, choosing to do their own bookings etc. There's 2 options if wanting to put the apartment into the "Rental Pool".

### Quick Facts

- 24 hour security
- Secure on-site parking
- Indoor and outdoor swimming pool
- Barbeque facilities
- Gymnasium
- Squash court
- Coin operated laundry room
- Free Wi-Fi



### Nearby Attractions

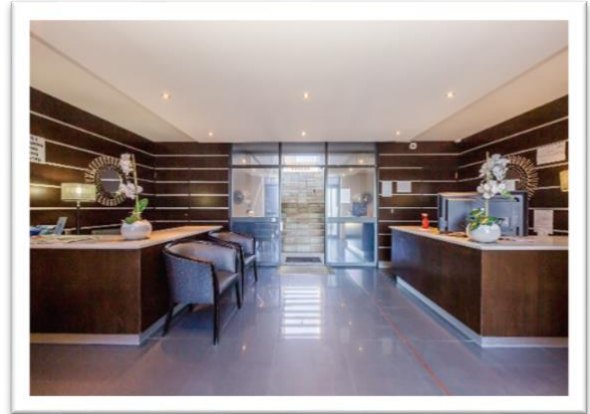
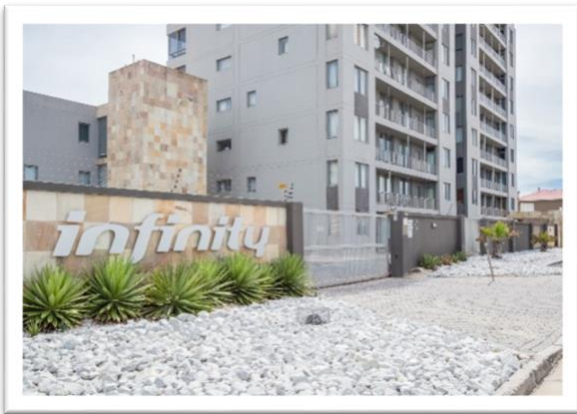
A short 20 minute drive into the city centre allows visitors to experience all that Cape Town has to offer.

Visit the historic Castle of Good Hope, go up Table Mountain, take a Big Red Bus tour to Kirstenbosch and Hout Bay or go shopping at the V&A Waterfront.

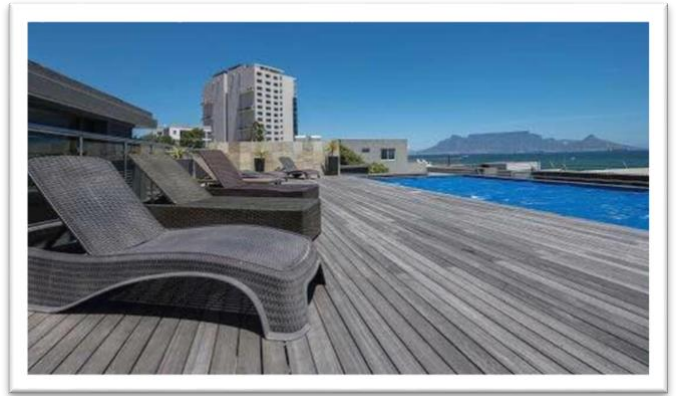
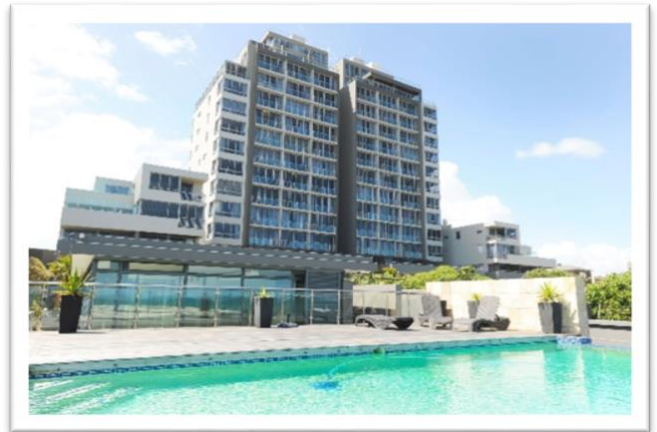
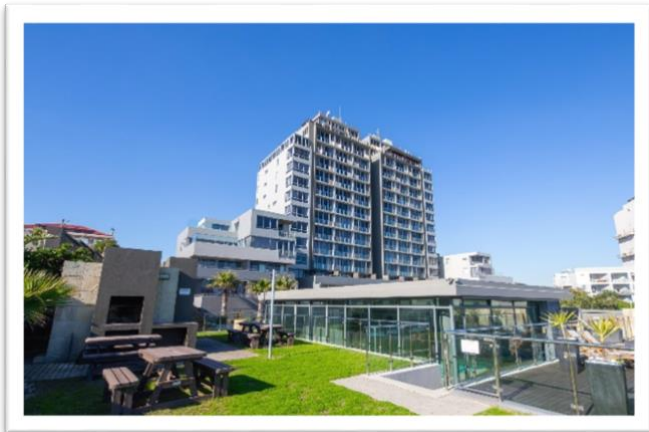
For the more adventurous guests, learn to kite-surf in Bloubergstrand with a range of packages including equipment hire or play a round of golf at any of the nearby courses. We can arrange for any activity, including hiring jet-ski's, helicopter rides, shark cage diving, scuba diving and para-gliding.

Should you fancy a lazy day in the magical Cape Winelands, you can do a self-drive trip to any of the renowned areas including Stellenbosch and Franschhoek.

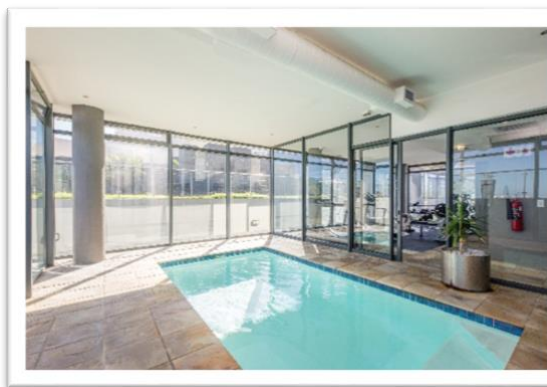
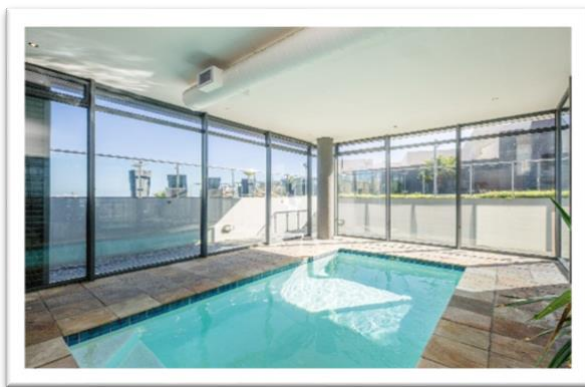
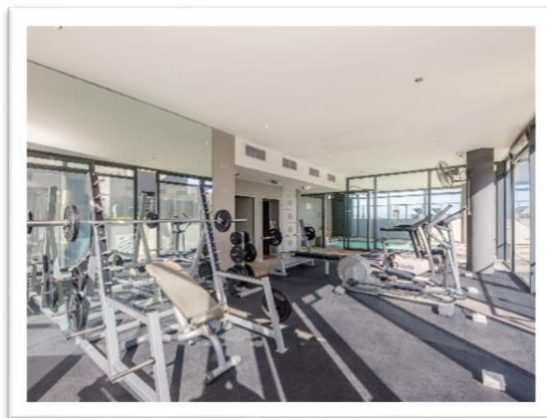
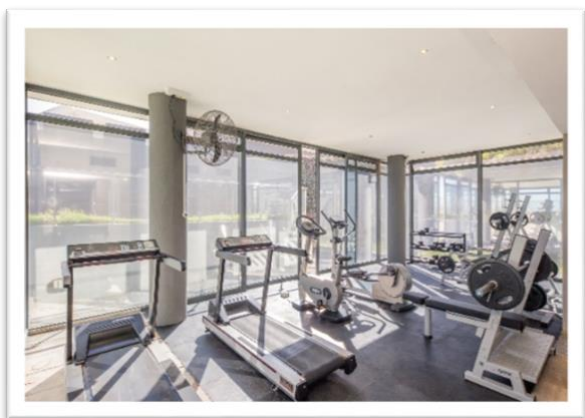
## ENTRANCE TO INFINITY



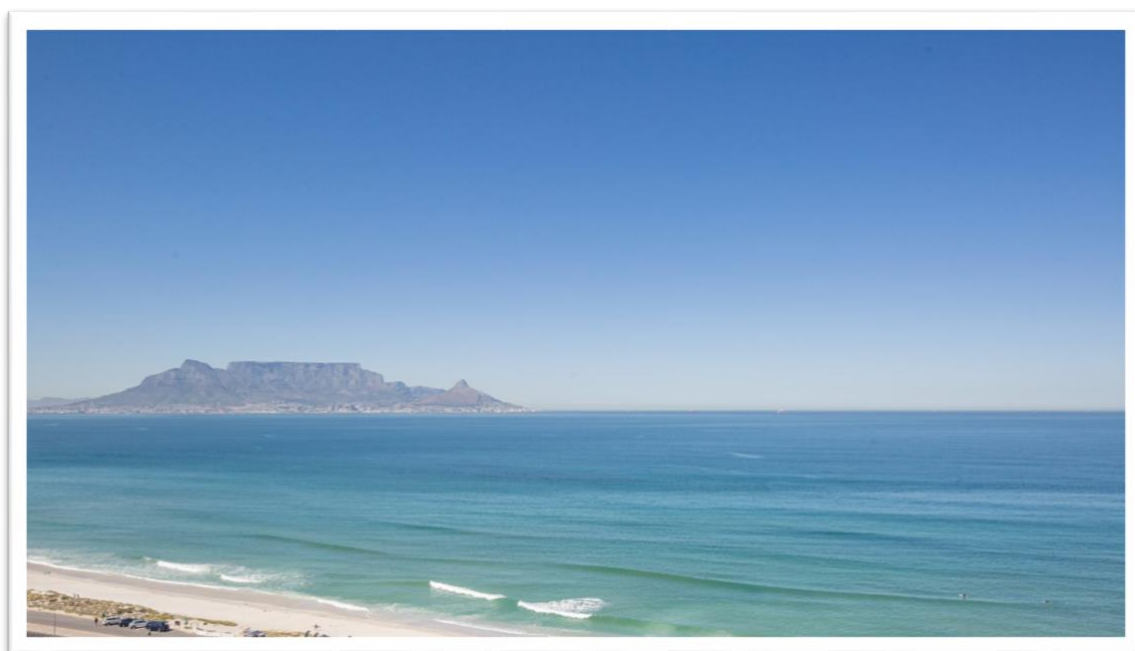
## OUTDOOR AREA



## FITNESS CENTRE



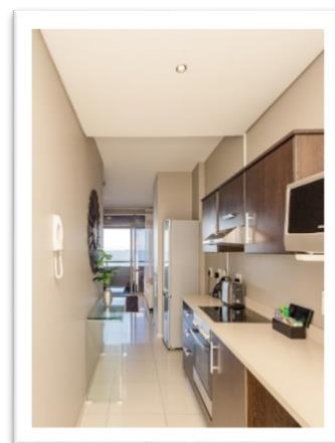
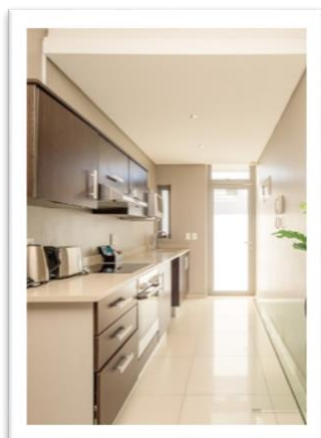
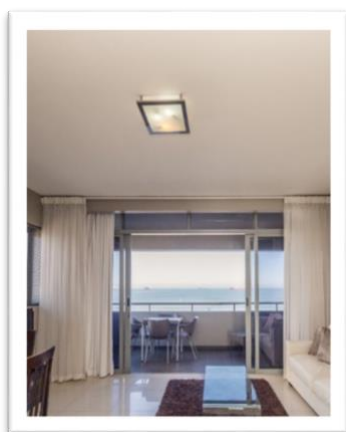
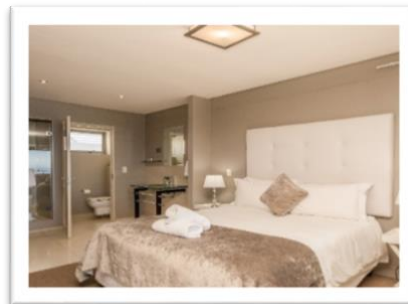
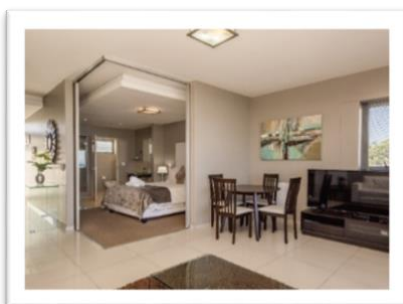
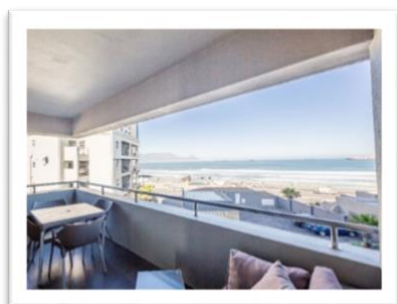
## View from the apartments



# 1 Bedroom Studio Apartment with Private Balcony Layout and Interior (G 11)

This lower floor bachelor apartment with its private 10sq meter balcony has beautiful views of Table Mountain, Robben Island and the ocean. The bedroom with built in cupboard, dressing table with mirror has two sliding doors which opens up into the lounge area. It has an en suite shower, basin and toilet. The open plan living area consisting of a kitchen, small dining area and lounge with a sliding door which opens up onto a private balcony where you can sit and relax while enjoying the best view in Cape Town.

| Apartment | Description | Internal Size | Balcony Size | Total Size | Price incl VAT | Levies | CSOS | Rates |
|-----------|-------------|---------------|--------------|------------|----------------|--------|------|-------|
| G 11      | 1 Bedroom   | 50            | 10           | 60         | R2 620 000     | R1 708 | R19  | R513  |

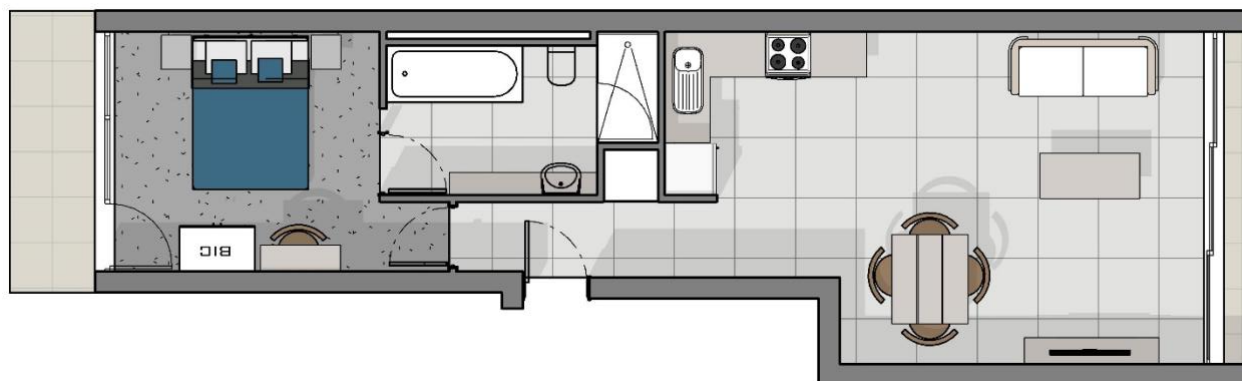
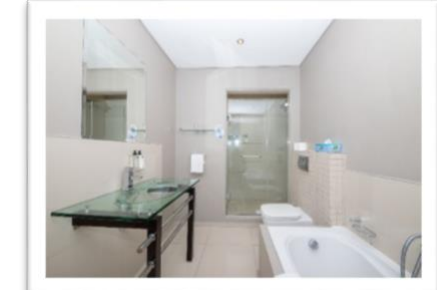
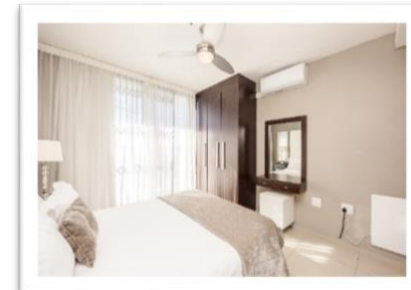
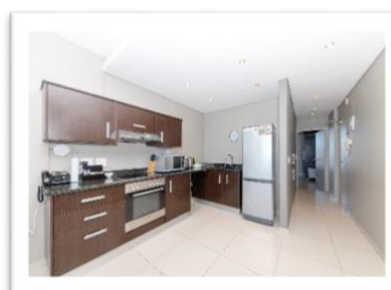
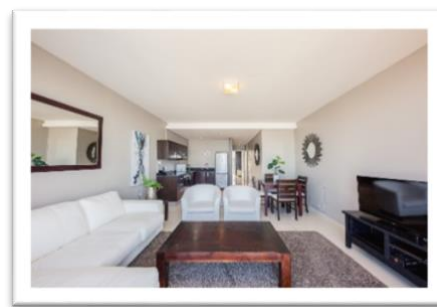
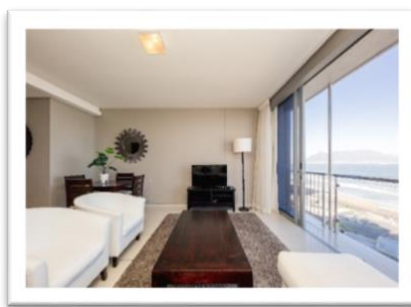


UNIT G 11

# 1 Bedroom Apartment

This 60 sq meter apartment has stunning uninterrupted views of Table Mountain, Robben Island and the ocean. The bedroom is fitted with a ceiling fan, built in cupboard, dressing table with mirror and has sandblasted glass doors leading to the bathroom (bath, hand basin, toilet and separate shower) The open plan living area consists of the kitchen, dining area and lounge with double sliding doors which open up onto a stand-on balcony from where you can enjoy the best view in Cape Town.

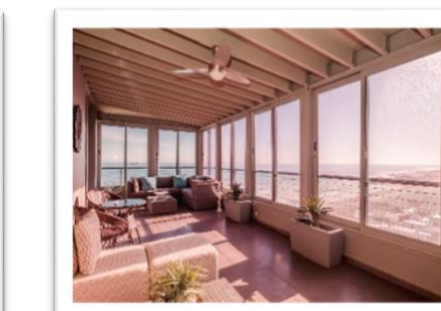
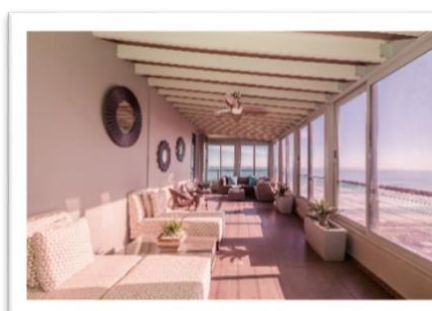
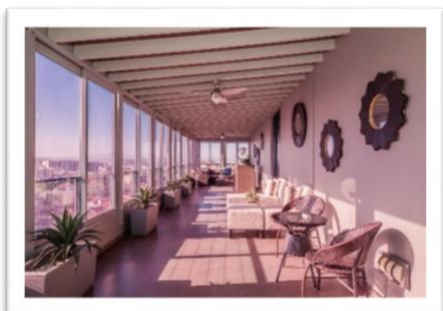
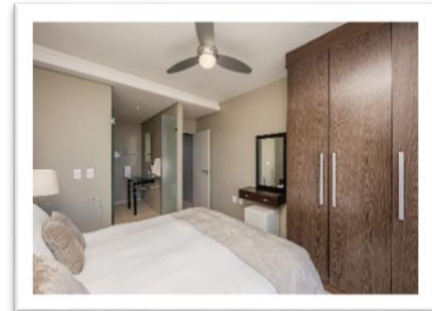
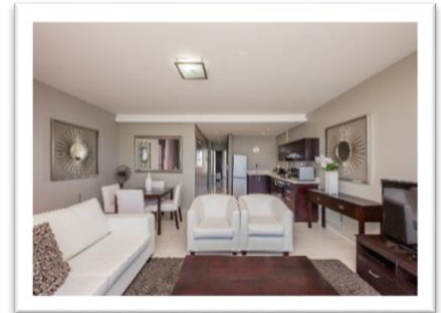
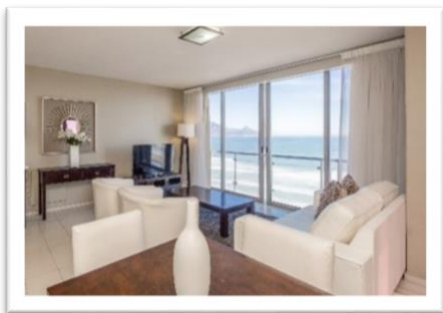
|       | Apartment | Description | Internal Size | Balcony Size | Total Size | Price incl VAT | Levies | CSOS | Rates |
|-------|-----------|-------------|---------------|--------------|------------|----------------|--------|------|-------|
| Level |           |             |               |              |            |                |        |      |       |
| 1     | 102       | 1 Bedroom   | 60            | 0            | 60         | R2 620 000     | R1 793 | R21  | R513  |
| 1     | 103       | 1 Bedroom   | 60            | 0            | 60         | R2 620 000     | R1 708 | R19  | R513  |
| 5     | 503       | 1 Bedroom   | 60            | 0            | 60         | R2 790 000     | R1 708 | R19  | R513  |
| 7     | 706       | 1 Bedroom   | 60            | 0            | 60         | R2 900 000     | R1 708 | R19  | R513  |
| 9     | 902       | 1 Bedroom   | 60            | 0            | 60         | R2 997 000     | R1 708 | R19  | R513  |



# 1 Bedroom Apartment with Enclosed Balcony

This 68sq meter one bedroom apartment with its 59sq meter enclosed balcony has stunning views of Table Mountain, Robben Island and the ocean. The bedroom is fitted with a ceiling fan, built in cupboard, dressing table, mirror and sandblasted glass doors leading to a full bathroom. The open plan living area consists of the kitchen, dining area and lounge which has a sliding door opening up onto a stand-on balcony. Another sliding door leads to the stunning and spacious enclosed balcony which has 2 seating areas, 2 loungers and a bar area. Here you can relax and truly enjoy the view no matter what the weather conditions.

| Level | Apartment | Description | Internal Size | Balcony Size | Total Size | Price incl VAT | Levies | CSOS | Rates |
|-------|-----------|-------------|---------------|--------------|------------|----------------|--------|------|-------|
| 9     | 901       | 1 Bedroom   | 68            | 59(terrace)  | 127        | R6 174 000     | R2 192 | R27  | R622  |

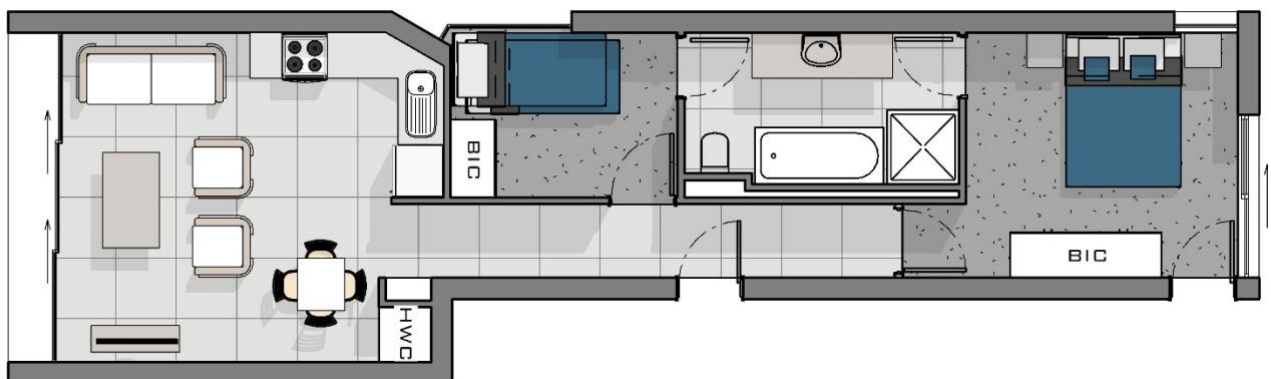
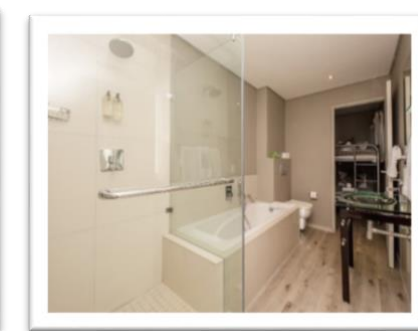
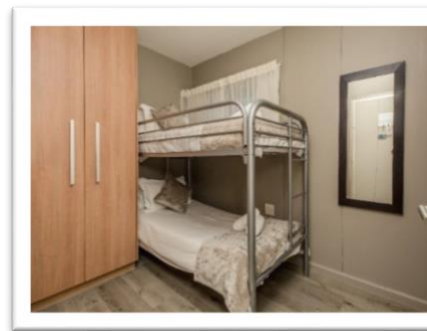
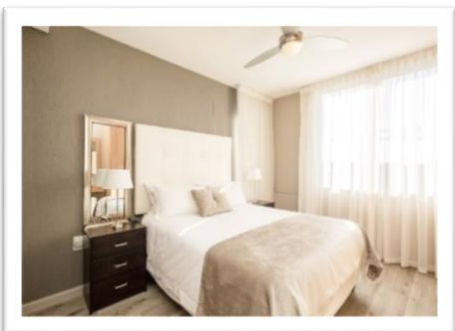
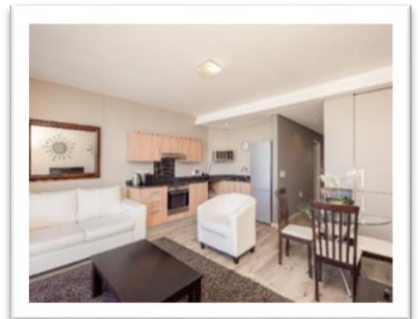
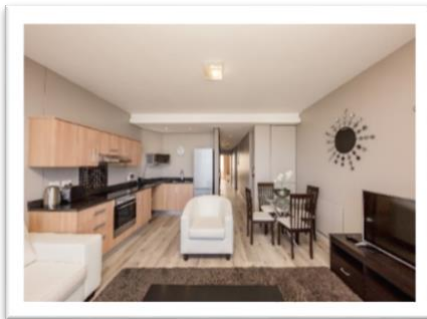
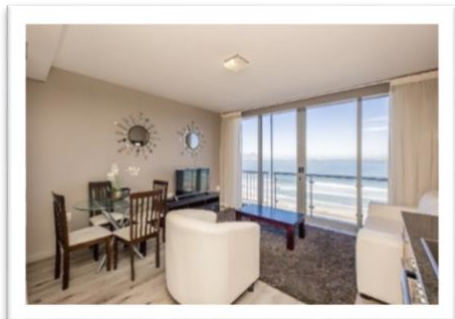




## 2 Bedroom Apartment with stand on Balcony

This 63sq meter apartment has stunning uninterrupted views of Table Mountain, Robben Island and the ocean. The main bedroom is fitted with a ceiling fan, built in cupboard and a dressing table with mirror. The inter-leading shared bathroom has a bath, hand basin, toilet and separate shower. The smaller second bedroom has a bunk bed (sleeping 2) and built in cupboard. The open plan living area consisting of a kitchen, dining area and lounge has a double sliding door which opens up onto a stand-on balcony from where you can enjoy the best view in Cape Town.

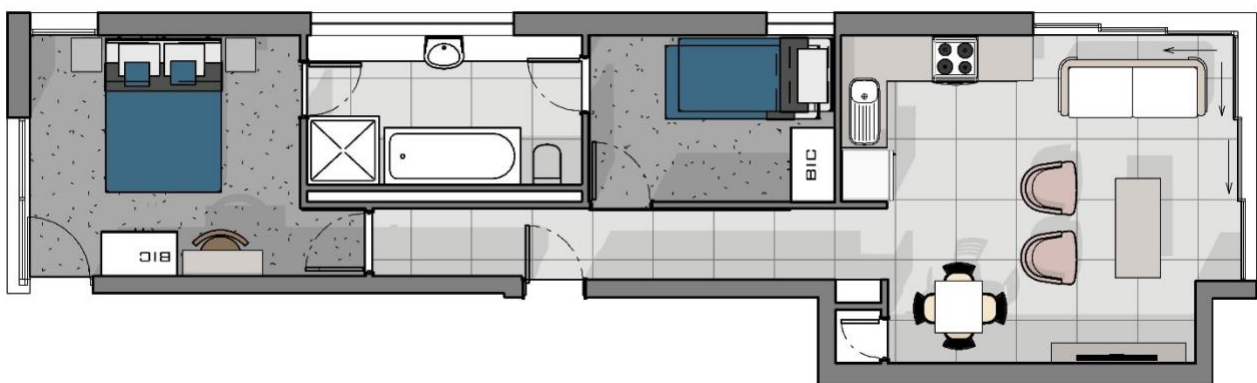
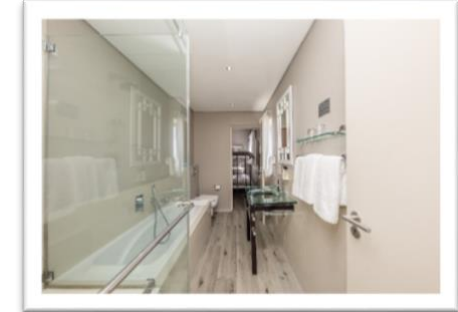
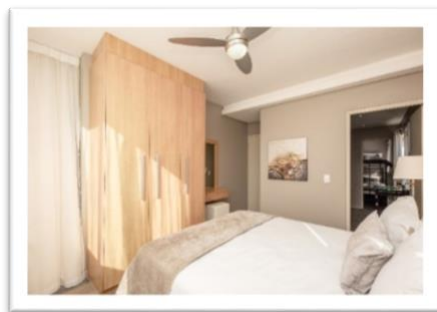
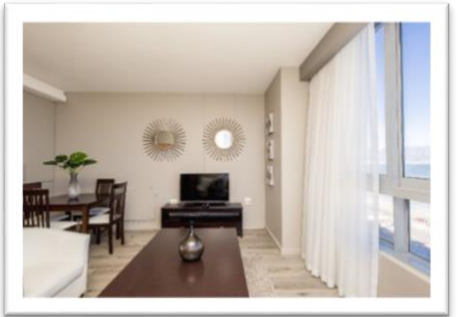
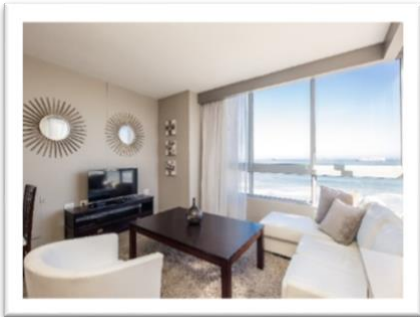
| Level | Apartment | Description | Internal Size | Balcony Size | Total Size | Price incl VAT | Levies | CSOS | Rates |
|-------|-----------|-------------|---------------|--------------|------------|----------------|--------|------|-------|
| 2     | 201       | 2 Bedroom   | 63            | 0            | 63         | R2 790 000     | R1 793 | R40  | R530  |
| 3     | 304       | 2 Bedroom   | 63            | 0            | 63         | R2 840 000     | R1 793 | R21  | R530  |
| 4     | 405       | 2 Bedroom   | 63            | 0            | 63         | R2 900 000     | R1 793 | R21  | R530  |
| 7     | 705       | 2 Bedroom   | 63            | 0            | 63         | R3 045 000     | R1 793 | R21  | R530  |
| 10    | 1003      | 2 Bedroom   | 68            | 0            | 68         | R3 375 000     | R1 936 | R23  | R558  |



## 2 Bedroom Apartment with Corner Windows

This 63sq meter apartment has stunning uninterrupted views of Table Mountain, Robben Island and the ocean. The main bedroom which is fitted with a ceiling fan, built in cupboard and a dressing table with mirror. The inter-leading shared bathroom has a bath, hand basin, toilet and separate shower. A smaller second bedroom is furnished with a bunk bed (sleeping 2) and built in cupboard. The open plan living area consisting of a kitchen, dining area and lounge has stacking corner windows which open up to allow you to enjoy the fresh sea air and the best view in Cape Town.

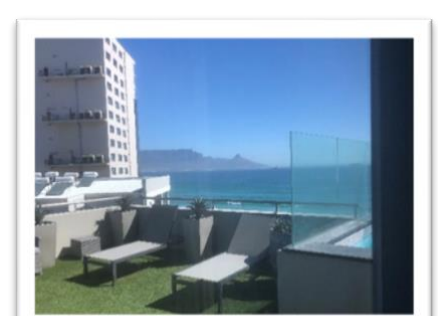
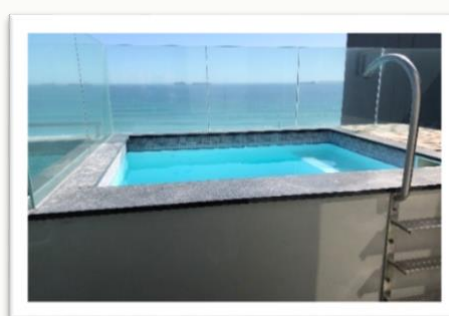
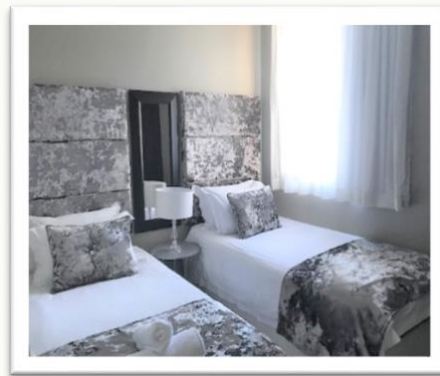
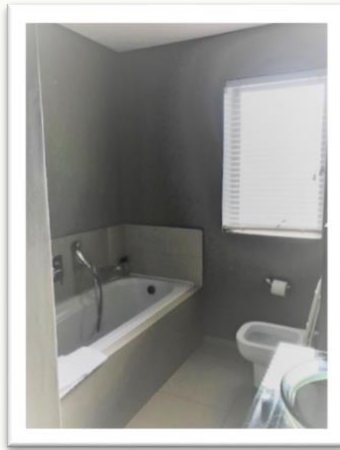
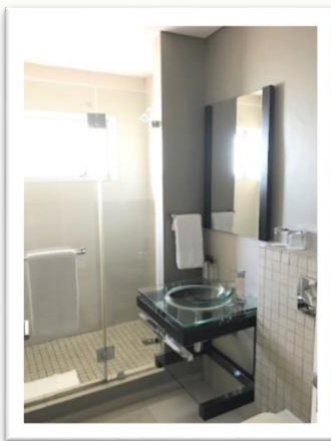
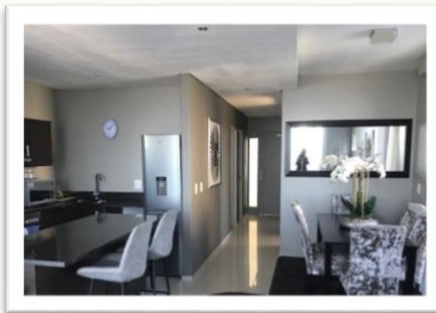
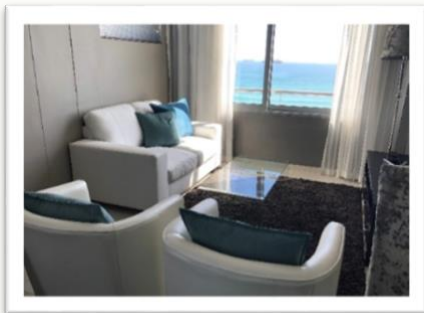
| Level | Apartment | Description | Internal Size | Balcony Size | Total Size | Price incl VAT | Levies | CSOS | Rates |
|-------|-----------|-------------|---------------|--------------|------------|----------------|--------|------|-------|
| 2     | 201       | 2 Bedroom   | 63            | 0            | 63         | R2 790 000     | R1 793 | R40  | R530  |
| 5     | 501       | 2 Bedroom   | 63            | 0            | 63         | R2 940 000     | R1 793 | R21  | R530  |
| 3     | 308       | 2 Bedroom   | 63            | 0            | 63         | R2 840 000     | R1 793 | R21  | R530  |
| 7     | 708       | 2 Bedroom   | 63            | 0            | 63         | R3 045 000     | R1 793 | R21  | R530  |



## 2 Bedroom Apartment Deluxe With Large Balcony and Splash Pool

This beautiful 86sq meter 2 bedroom 2 bathroom apartment with a large balcony has stunning views of Table Mountain, Robben Island and the ocean. The main bedroom has a wall mounted TV and a ceiling fan, built in cupboard, dressing table with mirror and a sliding door that leads out onto the balcony. The en-suite bathroom has a bath with hand shower, hand basin and toilet. The second bedroom has a two single beds with a built in cupboard. A second bathroom with shower, wash basin and toilet is situated next to the second bedroom. The open plan living area consisting of kitchen, dining area and lounge with flat screen TV has sliding doors which open up onto the balcony with its own splash pool. There's plenty of space where you can enjoy a barbecue on the gas "braai", laze around in the sun or have sundowners while simply enjoying the most spectacular sunsets

| Apartment<br>Size | Description<br>Size | Internal<br>VAT | Balcony | Total         | Price incl | Levies     | CSOS   | Rates |        |
|-------------------|---------------------|-----------------|---------|---------------|------------|------------|--------|-------|--------|
| Level<br>2        | 209                 | 2 Bedroom       | 86      | 59(terr/pool) | 145        | R6 660 000 | R3 273 | R40   | R1 422 |



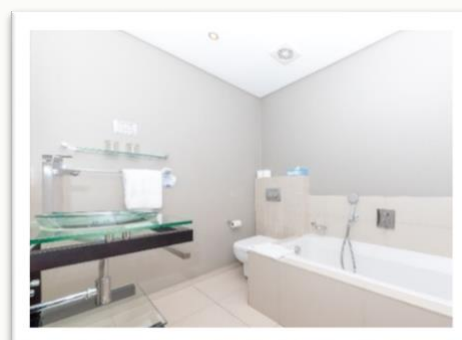
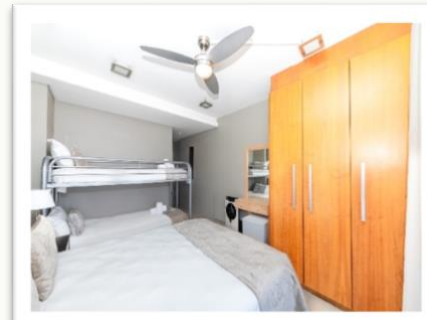
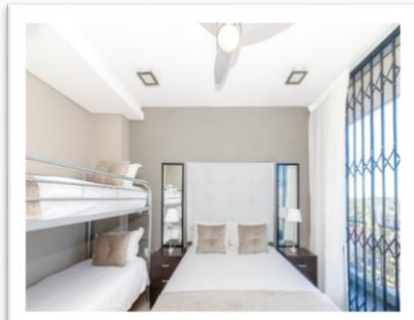
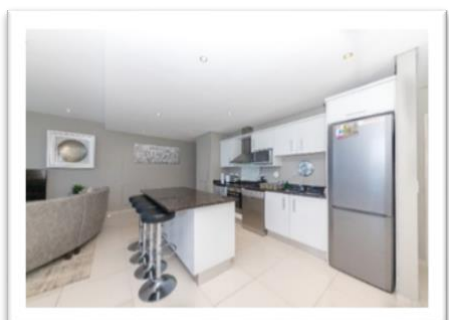
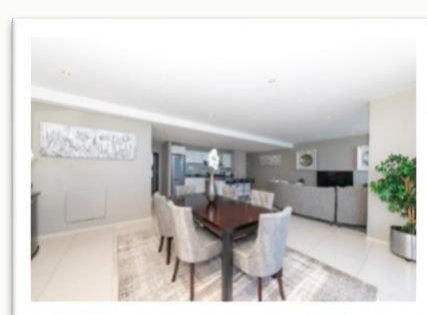
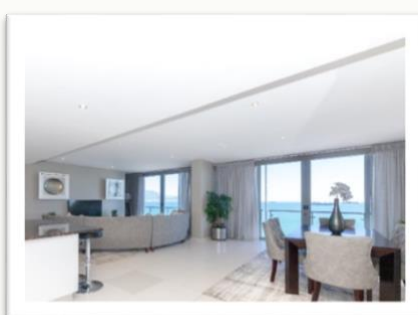
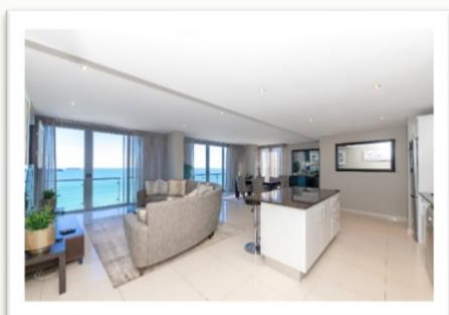
## 2 Bedroom Apartment Deluxe With Large Balcony and Splash Pool



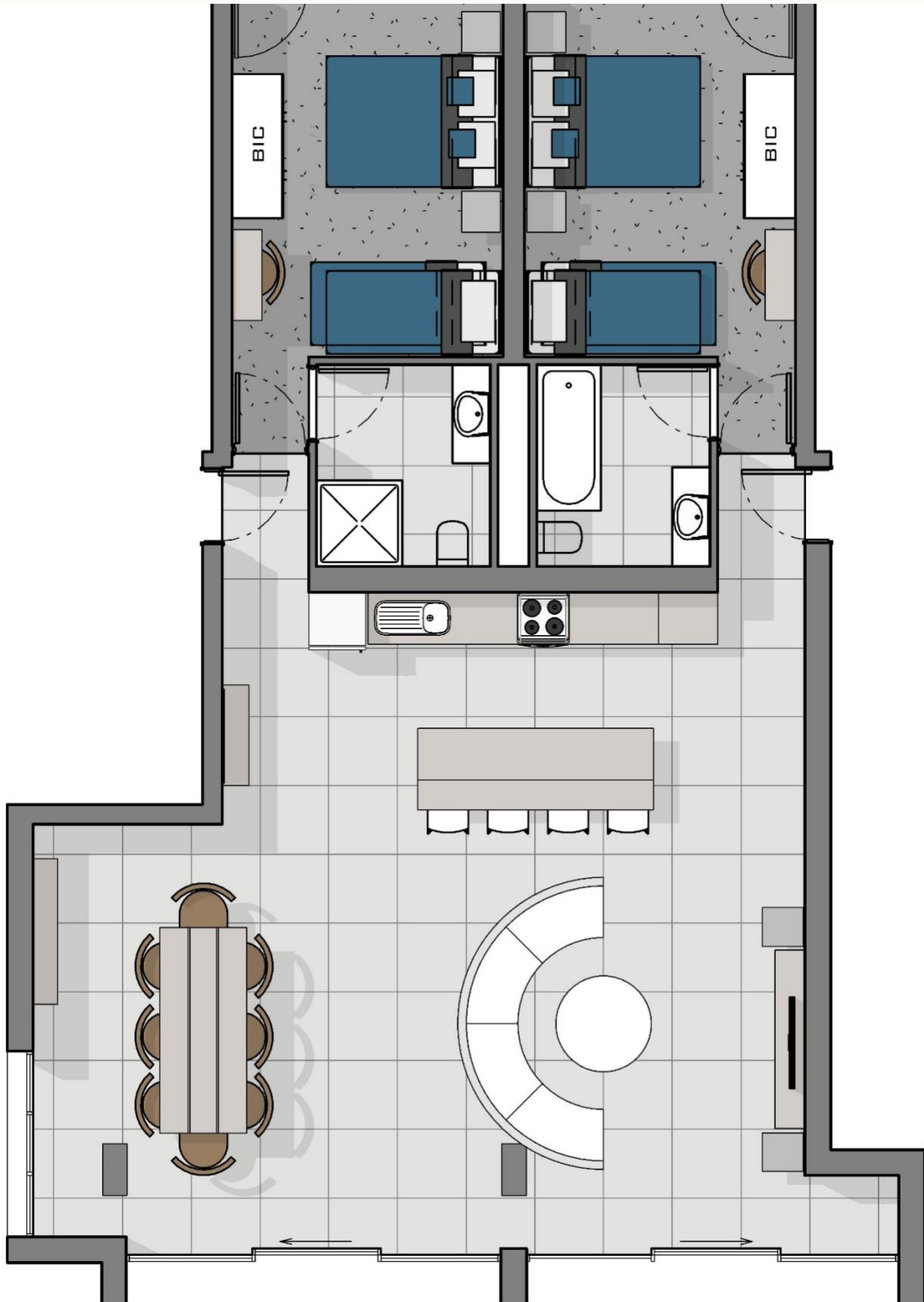
## 2 Bedroom Superior Apartment with 2 Bathrooms and Spacious Living Area

Situated on the 10<sup>th</sup> floor this beautiful 110sq meter 2 bedroom 2 bathroom apartment with a stand on balcony has stunning views of Table Mountain, Robben Island and the ocean. The bedrooms are spacious and each have a queen size bed and a bunk bed (sleeping 4 per bedroom) ceiling fans with built in cupboards plus a dressing table with mirror. One bathroom has a bath with a hand shower, hand basin and toilet and the second bathroom has a shower, wash basin and toilet. The large open plan living area consisting of kitchen, dining area and lounge has sliding doors which open up onto the two stand-on balconies from where you can enjoy the most spectacular sunsets!

|       | Apartment | Description | Internal Size | Balcony Size | Total Size | Price incl VAT | Levies | CSOS | Rates  |
|-------|-----------|-------------|---------------|--------------|------------|----------------|--------|------|--------|
| Level |           |             |               |              |            |                |        |      |        |
| 10    | 1001      | 2 Bedroom   | 115           | 6            | 121        | R5 984 000     | R3 444 | R40  | R1 220 |
| 10    | 1004      | 2 Bedroom   | 108           | 7            | 115        | R5 690 000     | R3 273 | R40  | R1 187 |



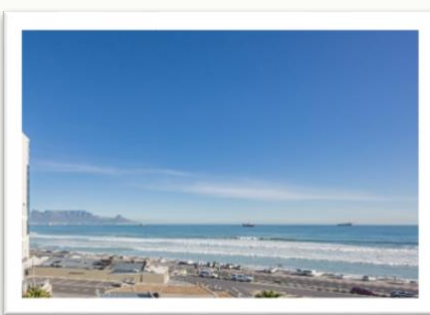
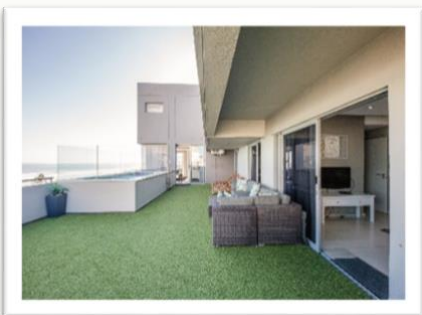
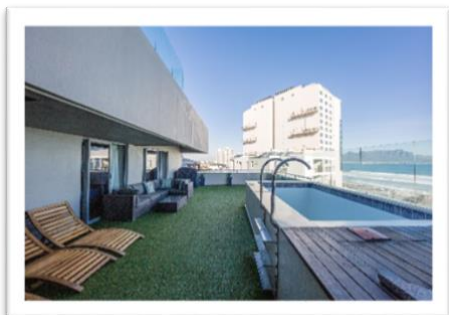
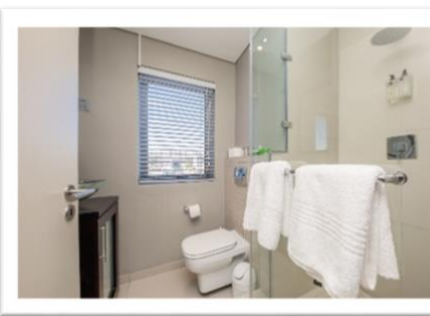
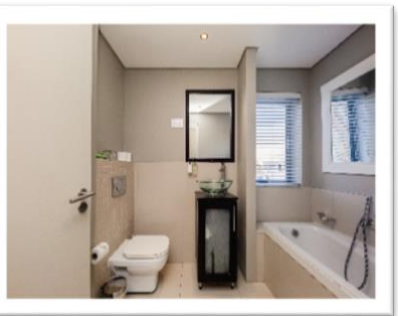
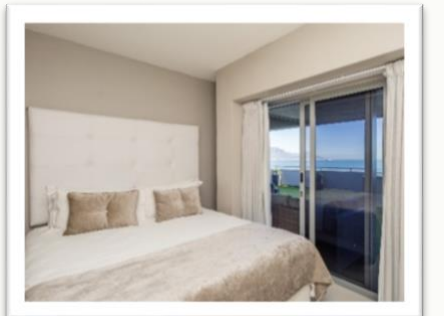
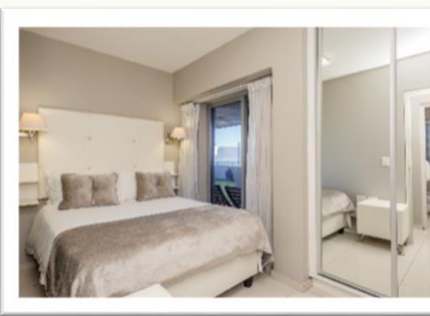
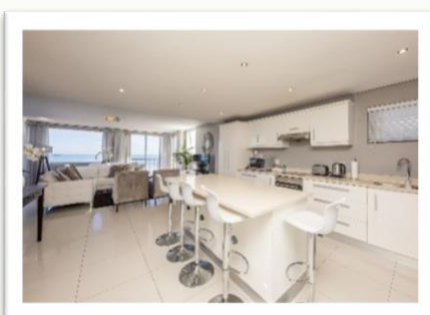
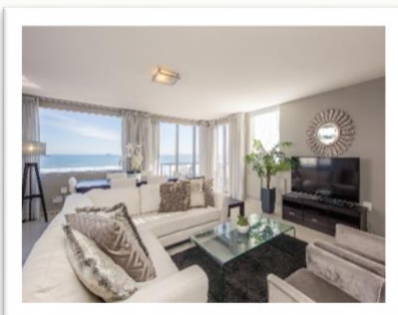
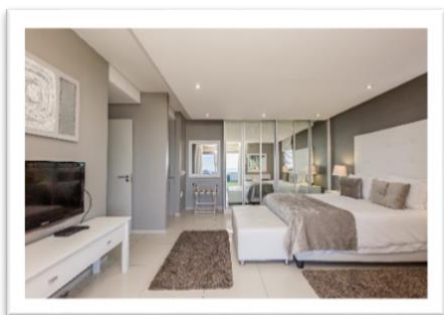
## 2 Bedroom Superior Apartment with 2 Bathrooms and Spacious Living Area



### **3 Bedroom Apartment Deluxe With Large Balcony and Splash Pool**

Absolutely stunning 110sq meter 3 bedroom 3 bathroom apartment with a large balcony and pool which has awesome views of Table Mountain and the ocean. The spacious main bedroom with flat screen TV is well designed with built in cupboards, a dressing table and a sliding door that leads out onto the balcony. The en-suite bathroom has a bath with a hand shower, hand basin and toilet. The second bedroom has a double bed with a built in cupboard. Situated across from the second bedroom is another bathroom with shower, wash basin and toilet. The 3<sup>rd</sup> bedroom also has a double bed (which can be changed to a bunk bed) with a built in cupboard and has a 3<sup>rd</sup> bathroom situated next to it with bath, wash basin and toilet. All bedrooms have sliding doors which open up onto the balcony. The stunning spacious open plan living has a well fitted kitchen, dining area and lounge which has sliding doors which open up onto the balcony with a splash pool. There's plenty of space where you can enjoy a barbecue on the gas "braai", laze around in the sun or have sundowners while simply enjoying the most spectacular sunsets!

| Apartment | Description | Internal Size | Balcony Size  | Total Size | Price incl VAT | Levies | CSOS | Rates |
|-----------|-------------|---------------|---------------|------------|----------------|--------|------|-------|
| 109       | 3 bedroom   | 110           | 59(terr/pool) | 169        | SOLD           |        |      |       |



# 3 Bedroom Apartment Deluxe With Large Balcony and Splash Pool

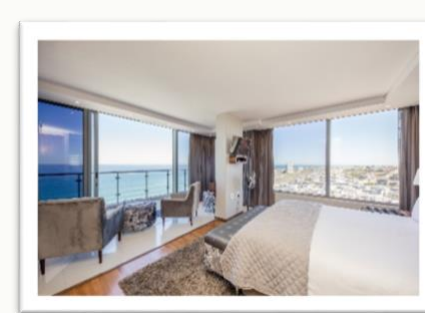
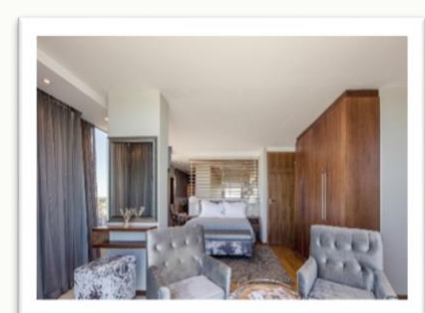
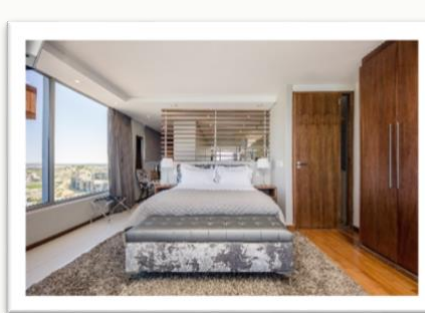
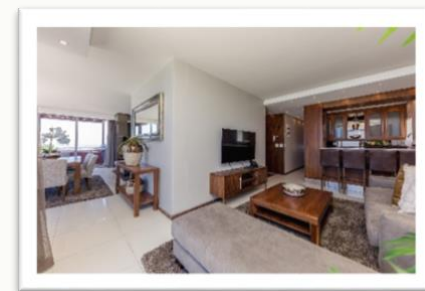
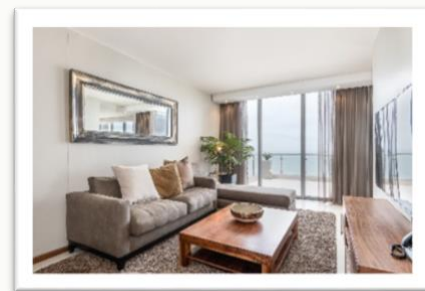
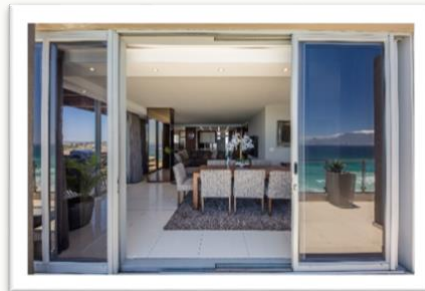
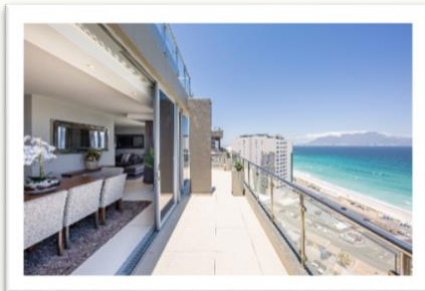
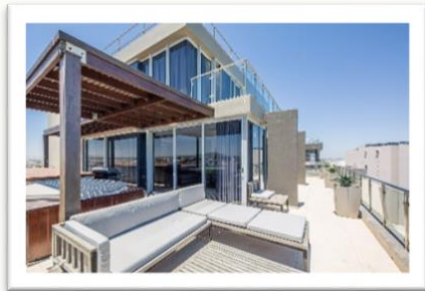


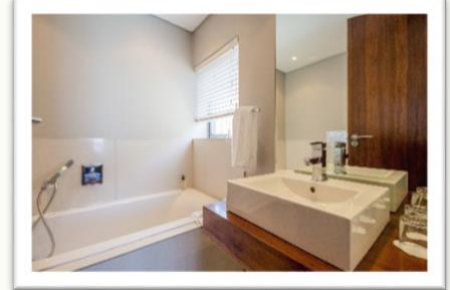
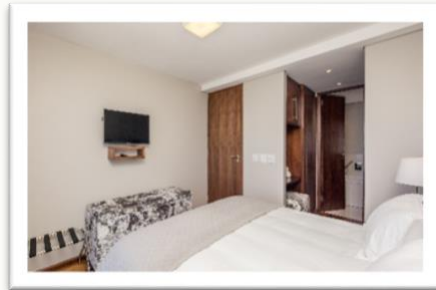
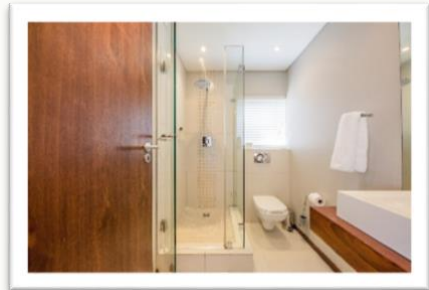
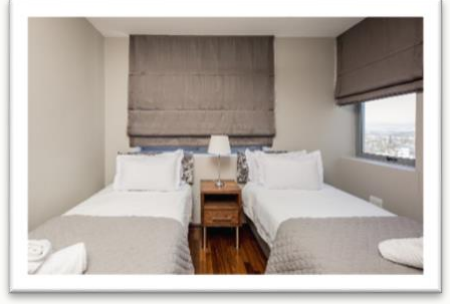
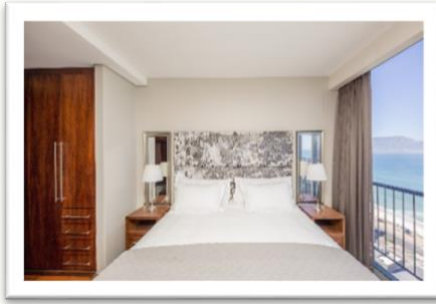


## 4 Bedroom/ 4 Bathroom Penthouse with Jacuzzi and Large Balcony

This stunning 207sq meter double level apartment with majestic views is situated on the 11th and 12th floor. It has 4 bedrooms with built in cupboards and flat screen TV's in every bedroom as well as 4 bathrooms. The spacious lounge and the 2<sup>nd</sup> smaller lounge with bar both have flat screen TV's. The kitchen is well equipped and forms part of the open plan lounge and dining area with sliding doors leading out onto the balcony. The large balcony on the 1st level has a Jacuzzi and shaded lounging area with a large portable gas barbecue. Amazing uninterrupted views over the ocean and Table Mountain. A truly magnificent place to spend time with special friends and family. Full DSTV package throughout.

| Level | Apartment | Description         | Internal Size | Balcony Size | Total Size | Price incl VAT | Levies | CSOS | Rates |
|-------|-----------|---------------------|---------------|--------------|------------|----------------|--------|------|-------|
| 11    | 1101      | 4 Bedroom Penthouse | 207           | 78           | 285        | SOLD           | SOLD   |      | SOLD  |





## 1101 1<sup>ST</sup> FLOOR



# 1101 2<sup>ND</sup> FLOOR



# INFINITY APARTMENTS PRICE LIST

| Apartment No: | Apartment Description | Internal Size    | Balcony Size | Total Size    | PRICE incl VAT | LEVIES      | CSOS   | RATES |        |
|---------------|-----------------------|------------------|--------------|---------------|----------------|-------------|--------|-------|--------|
| Level 11      | 1101                  | 4 Bedroom Pnthse | 207          | 78            | 285            | R14 755 000 | R6 689 | R80   | R2 341 |
|               | 1102                  | 4 Bedroom Pnthse | 208          | 173           | 381            | R17 265 000 | R6 404 | R80   | R2 407 |
| Level 10      | 1001                  | 2 Bedroom        | 115          | 6             | 121            | R5 984 000  | R3 444 | R40   | R1 220 |
|               | 1002                  | 2 Bedroom        | 68           | 0             | 68             | R3 375 000  | R1 936 | R23   | R558   |
|               | 1003                  | 2 Bedroom        | 68           | 0             | 68             | R3 375 000  | R1 936 | R23   | R558   |
|               | 1004                  | 2 Bedroom        | 108          | 7             | 115            | R5 690 000  | R3 273 | R40   | R1 187 |
|               | 1005                  | 2 Bedroom        | 63           | 0             | 63             | R3 186 000  | R1 793 | R21   | R530   |
| Level 9       | 901                   | 1 Bedroom        | 68           | 59(terrace)   | 127            | R6 174 000  | R2 192 | R27   | R622   |
|               | 902                   | 1 Bedroom        | 60           | 0             | 60             | R2 997 000  | R1 708 | R19   | R513   |
|               | 904                   | 2 Bedroom        | 63           | 0             | 63             | R3 140 000  | R1 793 | R21   | R530   |
|               | 905                   | 1 Bedroom        | 60           | 0             | 60             | R2 997 000  | R1 708 | R19   | R513   |
|               | 906                   | 1 Bedroom        | 60           | 0             | 60             | R2 997 000  | R1 708 | R19   | R513   |
|               | 907                   | 2 Bedroom        | 63           | 0             | 63             | R3 140 000  | R1 793 | R21   | R530   |
|               | 802                   | 1 Bedroom        | 60           | 0             | 60             | R2 950 000  | R1 708 | R19   | R513   |
|               | 804                   | 2 Bedroom        | 63           | 0             | 63             | R3 091 000  | R1 793 | R21   | R530   |
|               | 805                   | 2 Bedroom        | 63           | 0             | 63             | R3 091 000  | R1 793 | R21   | R530   |
|               | 807                   | 1 Bedroom        | 60           | 0             | 60             | R2 950 000  | R1 708 | R19   | R513   |
|               | 808                   | 2 Bedroom        | 63           | 0             | 63             | R3 091 000  | R1 793 | R21   | R530   |
| Level 7       | 705                   | 2 Bedroom        | 63           | 0             | 63             | R3 045 000  | R1 793 | R21   | R530   |
|               | 706                   | 1 Bedroom        | 60           | 0             | 60             | R2 900 000  | R1 708 | R19   | R513   |
|               | 708                   | 2 Bedroom        | 63           | 0             | 63             | R3 045 000  | R1 793 | R21   | R530   |
| Level 6       | 605                   | 2 bedroom        | 63           | 0             | 63             | R2 989 000  | R1 793 | R21   | R530   |
|               | 606                   | 1 Bedroom        | 60           | 0             | 60             | R2 850 000  | R1 708 | R19   | R513   |
| Level 5       | 501                   | 2 Bedroom        | 63           | 0             | 63             | R2 940 000  | R1 793 | R21   | R530   |
|               | 503                   | 1 Bedroom        | 60           | 0             | 60             | R2 790 000  | R1 708 | R19   | R513   |
| Level4        | 405                   | 2 Bedroom        | 63           | 0             | 63             | R2 900 000  | R1 793 | R21   | R530   |
| Level 3       | 304                   | 2 Bedroom        | 63           | 0             | 63             | R2 840 000  | R1 793 | R21   | R530   |
|               | 308                   | 2 Bedroom        | 63           | 0             | 63             | R2 840 000  | R1 793 | R21   | R530   |
| Level 2       | 201                   | 2 Bedroom        | 63           | 0             | 63             | R2 790 000  | R1 793 | R40   | R530   |
|               | 202                   | 1 Bedroom        | 60           | 0             | 60             | R2 670 000  | R1 708 | R21   | R513   |
|               | 203                   | 1 bedroom        | 60           | 0             | 60             | R2 670 000  | R1 708 | R19   | R513   |
|               | 207                   | 1 Bedroom        | 60           | 0             | 60             | R2 670 000  | R1 708 | R19   | R513   |
|               | 209                   | 2 Bedroom        | 86           | 59(terr/pool) | 145            | R6 660 000  | R3 273 | R40   | R1 422 |
| Level 1       | 102                   | 1 Bedroom        | 60           | 0             | 60             | R2 620 000  | R1 793 | R21   | R513   |
|               | 103                   | 1 Bedroom        | 60           | 0             | 60             | R2 620 000  | R1 708 | R19   | R513   |
|               | 109                   | 3 bedroom        | 110          | 59(terr/pool) | 169            | R7 780 000  | R4 810 | R40   | R1 729 |
|               | G 11                  | 1 Bedroom        | 50           | 10            | 60             | R2 620 000  | R1 708 | R19   | R513   |

Contact Agent to view:

Marilette van Heerden 0607290284