

2 BED | 2 BATH | 69 M2

TYPE D

UNIT 69 - FLEX UP
SECOND FLOOR
R1 455 000

UNIT 98 - FLEX UP
THIRD FLOOR
R1 495 000

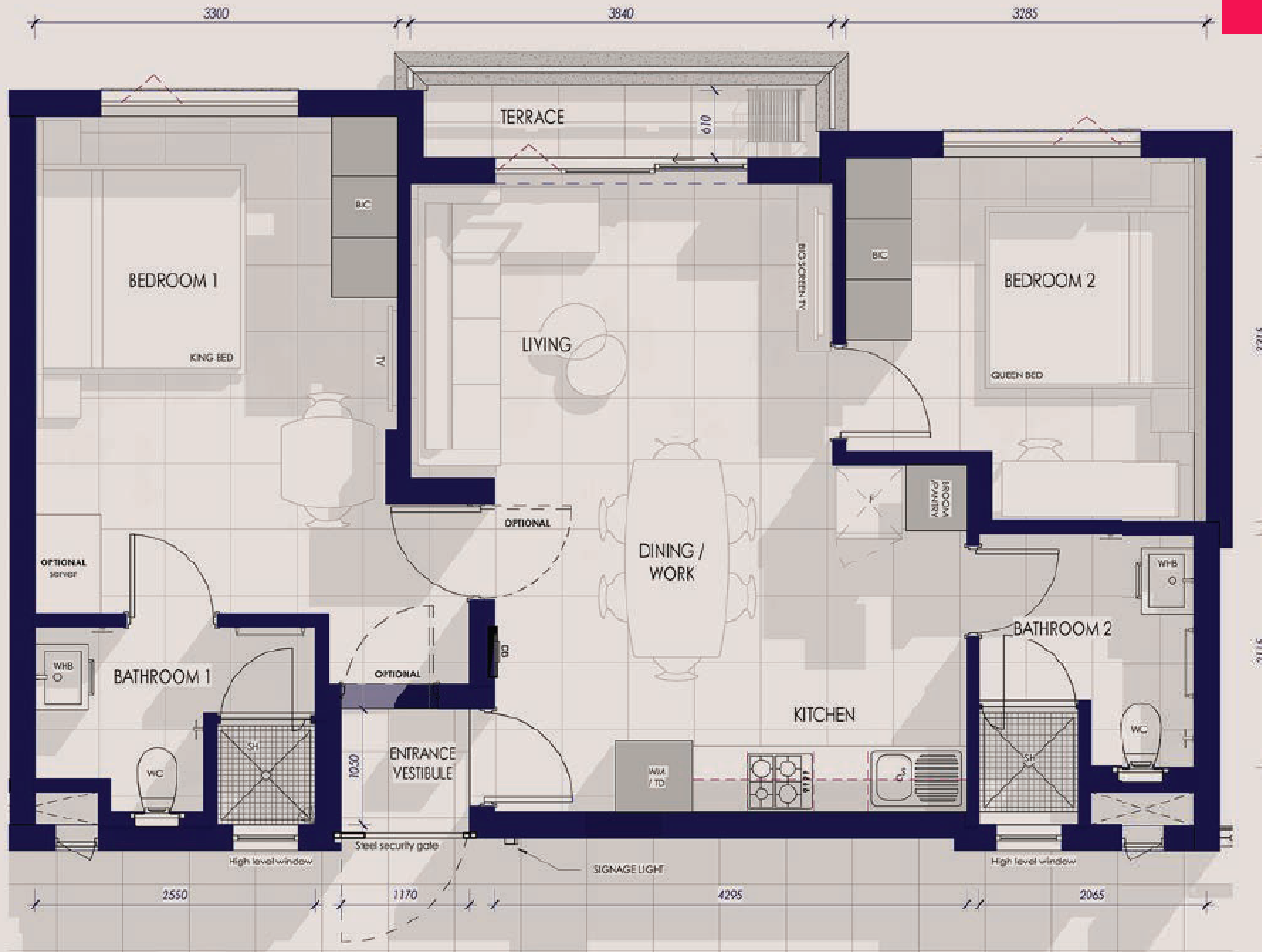


FLEX
ON MURRAY

2 BED | 2 BATH | 70 M2

TYPE E

UNIT 26 - FLEX UP
GROUND FLOOR
PRIVATE GARDEN - 31 m2
R1 437 000



FLEX
ON MURRAY

2 BED | 2 BATH | 117 M2

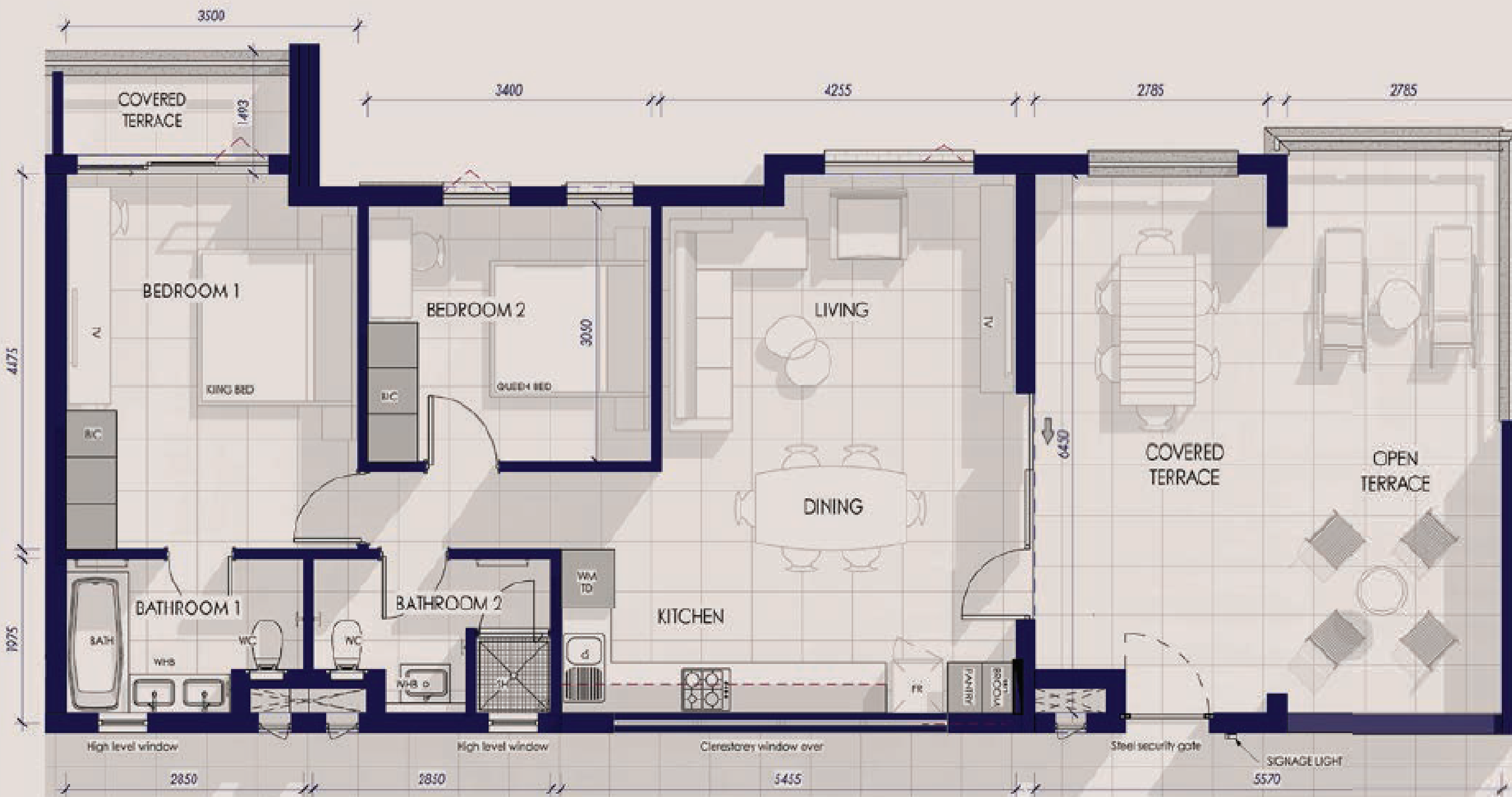
TYPE F

UNIT 83

THIRD FLOOR

PRIVATE PATIO - 41 m2

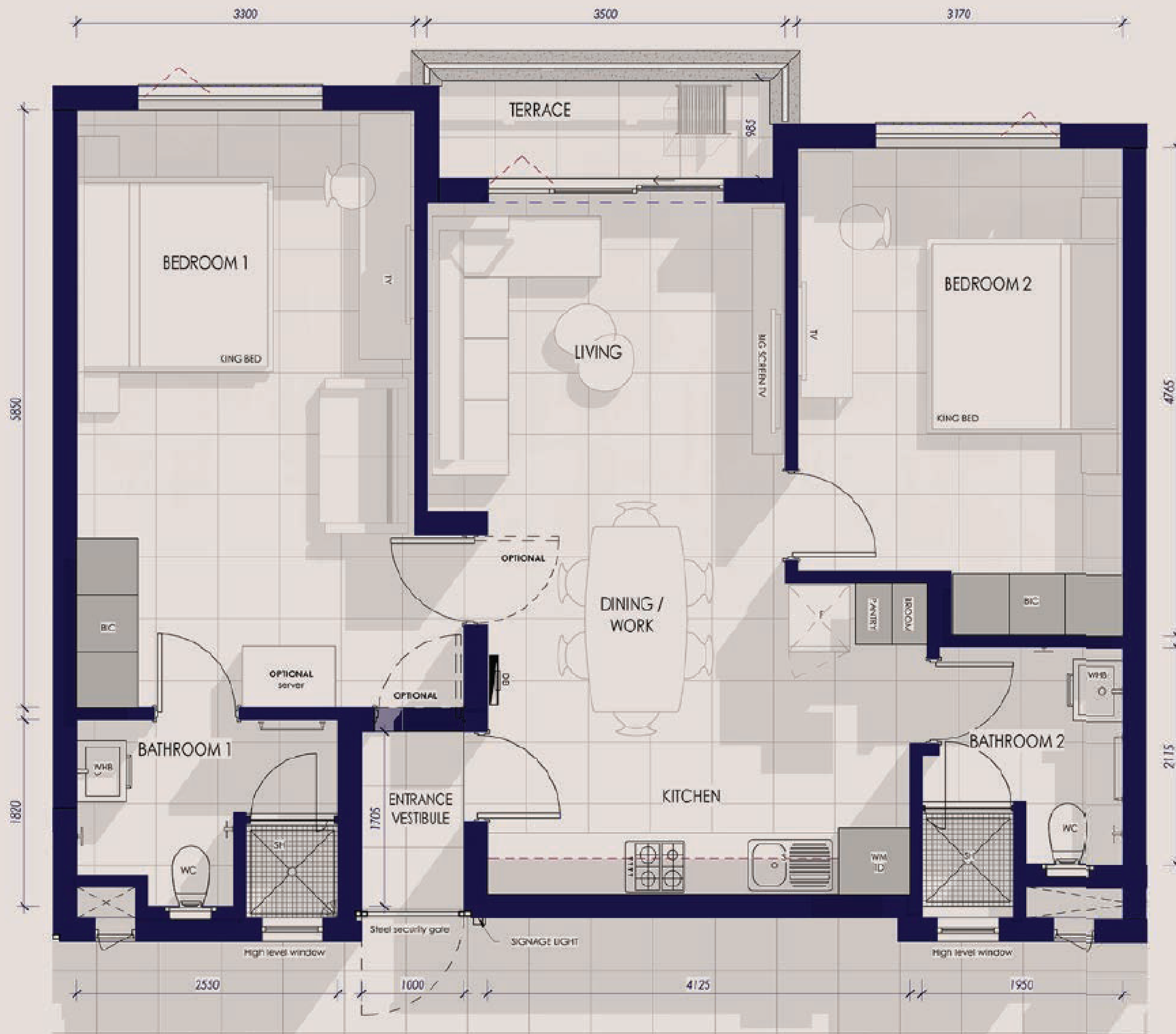
R1 889 000



FLEX
ON MURRAY

2 BED | 2 BATH | 82 M2

TYPE G



UNIT 16

GROUND FLOOR

PRIVATE GARDEN - 61 m²

R1 825 000

UNIT 43 - FLEX UP

FIRST FLOOR

R1 572 000

UNIT 86

THIRD FLOOR

R1 754 000

UNIT 87

THIRD FLOOR

R1 785 000

UNIT 94 - FLEX UP

THIRD FLOOR

R1 777 000

FLEX
ON MURRAY

3 BED | 2 BATH | 88 M²

TYPE H

UNIT 61
SECOND FLOOR
R1 786 000



FLEX
ON MURRAY

3 BED | 2 BATH | 91 M2

TYPE J

UNIT 66 - FLEX UP
SECOND FLOOR
R1 890 000

UNIT 67
SECOND FLOOR
R1 867 000

UNIT 91 - FLEX UP
THIRD FLOOR
R2 010 000



FLEX
ON MURRAY